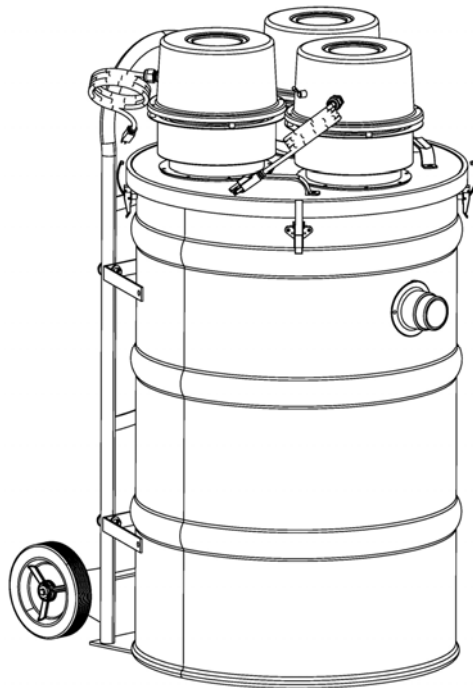


NIKRO

INSTRUCTION MANUAL

MODEL #HD55345



TRI-MOTOR HEPA VACUUM



All Nikro Industries Inc. products that have rated efficiencies of 99.97% @ 0.3 microns and/or 99.99% @ 0.3 microns, have H.E.P.A. filters that have been individually tested to meet these minimum efficiencies.

Although all the filters have been pre-tested, the possibility of leaks or filter failure due to handling, transportation, punctures, loaded filters, moisture, wear and tear, etc., does exist.

Therefore, when using this equipment in highly sensitive areas or where any release of particles above and beyond the minimum efficiencies would be detrimental and harmful to humans, plants or property; it is strongly recommended that the units be individually tested prior to their use.

This is to assure that they are maintaining the efficiency levels, which they were designed to filter out.

FAILURE TO DO SO COULD RESULT IN SERIOUS HARM TO HUMAN LIFE, PLANT LIFE AND/OR PROPERTY.

"READ AND SAVE THESE INSTRUCTIONS"

RISK OF FIRE, ELECTRIC SHOCK, OR PERSONAL INJURY

1115 N. Ellsworth Ave., Villa Park, IL 60181
Telephone: 630-530-0558 FAX: 630-530-0740 Toll Free: 800-875-6457

IMPORTANT SAFETY INSTRUCTIONS

When using an electrical appliance, basic precautions should always be followed, including the following:

BEFORE USING (THIS APPLIANCE)

READ ALL INSTRUCTIONS

WARNING – To reduce the risk of fire, electric shock, or injury:

1. Do not use vacuum outdoors or on wet surfaces
2. Do not allow vacuum to be used as a toy. Close attention is necessary when used by or near children.
3. Use vacuum only as described in this manual. Use only manufacturer's recommended attachments.
4. Do not put any object into openings. Do not use with any opening blocked; keep free of dust, lint, hair, and anything that may reduce airflow.
5. Keep hair, loose clothing, fingers, and all parts of body away from openings and moving parts.
6. Use extra care when cleaning on stairs.
7. Do not use vacuum to pick up flammable or combustible liquids, such as gasoline, or use in areas where they may be present.
8. "Do not use the vacuum to pick up anything that is burning or smoking, such as cigarettes, matches, or hot ashes."
9. "Do not use vacuum without dust bag and/or filters in place."
10. This vacuum cleaner should never be used in explosion-hazardous areas or to pick up combustible or flammable liquids such as gasoline, etc.
11. This vacuum should never be operated without the proper filters installed in the manner described in the following pages of this manual.
12. This machine should never be serviced by anyone other than an authorized technician.
13. This vacuum is for commercial use only.
14. Use only original NIKRO replacement parts and attachments.

IMPORTANT ELECTRICAL SAFETY INSTRUCTIONS

When using an electrical appliance, basic precautions should always be followed, including the following:

BEFORE USING (THIS APPLIANCE)

READ ALL INSTRUCTIONS

WARNING – To reduce the risk of fire, electric shock, or injury:

1. Do not leave appliance when plugged in. Unplug from outlet when not in use and before servicing.
2. Do not use with damaged cord or plug. If appliance is not working as it should, has been dropped, damaged, left outdoors, or dropped into water, return it to a service center.
3. Do not pull or carry by cord, use cord as a handle, close a door on cord, or pull cord around sharp edges or corners. Do not run appliance over cord. Keep cord away from heated surfaces.
4. Do not unplug by pulling on cord. To unplug, grasp the plug, not the cord.
5. Do not handle plug or appliance with wet hands.
6. Turn off all controls before unplugging.
7. “Connect to a properly grounded outlet only. See Grounding Instructions.”
8. Do not wrap the cord around the dome. Wrapping the cord around the dome will restrict the motor from exhausting properly and will result in overheating and damaging the motor

ELECTRICAL SPECIFICATION

This machine draws 9 amps on each motor and is designed to operate on 3 - 15 amp. 115V., 60 hz., AC circuit. Deviance of this could cause serious damage to the unit.

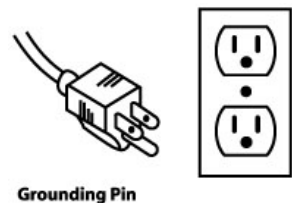
GROUNDING INSTRUCTIONS

This appliance must be grounded. If it should malfunction or breakdown, grounding provides a path of least resistance for electric current to reduce the risk of electric shock. This appliance is equipped with a cord having an equipment-grounding conductor and grounding plug. The plug must be inserted into an appropriate outlet that is properly installed and grounded in accordance with all local codes and ordinances.

WARNING – Improper connection of the equipment-grounding conductor can result in a risk of electric shock. Check with a qualified electrician or service person if you are in doubt as to whether the outlet is properly grounded. Do not modify the plug provided with the appliance – if it will not fit the outlet, have a proper outlet installed by a qualified electrician.

This appliance is for use on a nominal 120-V circuit and has a grounding attachment plug that looks like the plug illustrated in sketch A in Figure 20. Make sure that the appliance is connected to an outlet having the same configuration as the plug. No adaptor should be used with this appliance.

Sketch A Fig. 20



DO NOT USE 2 PRONG ADAPTER



FILTER MAINTENANCE AND REPLACEMENT INSTRUCTIONS

Your Nikro vacuum has a five stage filtration system; Non-clinging Dacron bag filter bag, Canvas filter bag, Polyester Prefilter, Impaction filter, and HEPA Filter. These filters should be inspected every time the tank is emptied or when a significant loss of vacuum power is detected. If a decrease in vacuum power is detected, turn off the vacuum immediately. (WARNING: Continued use could cause serious damage to motor and or HEPA filter.) This loss of vacuum power could be caused by one of the following:

- a) The tank may be full and needs to be emptied.
- b) The Dacron filter bag may be clogged and needs cleaning.
- c) The canvas filter bag may be clogged and needs cleaning.
- d) The polyester prefilter may be clogged and needs to be cleaned or replaced.
- e) The impaction filter may be clogged and needs to be replaced.
- t) The HEPA filter may be clogged and needs to be replaced.
- g) The wand, hose, or intake may be clogged and needs to be cleaned.

PROCEDURES FOR REMOVING CONTAMINATED FILTERS

Caution:

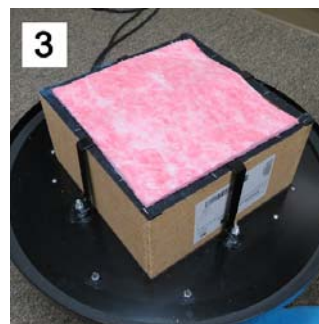
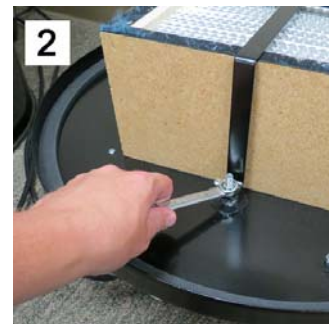
When removing contaminated filters or using this machine, you should always wear gloves, clothing, and a respirator approved for use with the particular contaminant you are working with.

FILTER REMOVAL PROCEDURES

1. Turn off and unplug machine.
2. Slowly and carefully lift one side of the lid assembly from the tank. Holding the lid with one hand, reach under the lid and gently tap all around the filter bag with locking band, allowing any dust particles to drop into the tank.
3. Carefully lift the lid assembly off the tank. With a damp rag, wipe the underside of the lid assembly. Set it aside and dispose of the rag properly.
4. Carefully remove the Dacron filter bag from the tank. This filter bag can be washed and reused.
5. Remove the 6 mil. breather bag. This bag can be removed by gathering the top of the bag together, hold bag just below breather holes and lift out of tank. This bag can be tied or taped below the breather holes.
6. Unhook the canvas filter bag clamp and slide the bag off the lid assembly. This filter bag can be washed and reused.
7. Carefully unfasten the Velcro from the polyester prefilter and remove it from the HEPA filter. This filter cannot be cleaned or reused discard when material begins to separate or fall apart.
8. Remove the impaction filter and discard it.
9. Take a damp rag and wipe down the inside of the tank. Dispose of contaminated rag properly.
10. All hazardous waste material must be disposed of properly. Never put contaminated debris in a regular trash container. All debris must be placed in a plastic bag or container labeled "Hazardous Materials", and should be removed by a licensed hauler. Consult proper authorities on disposal regulations.

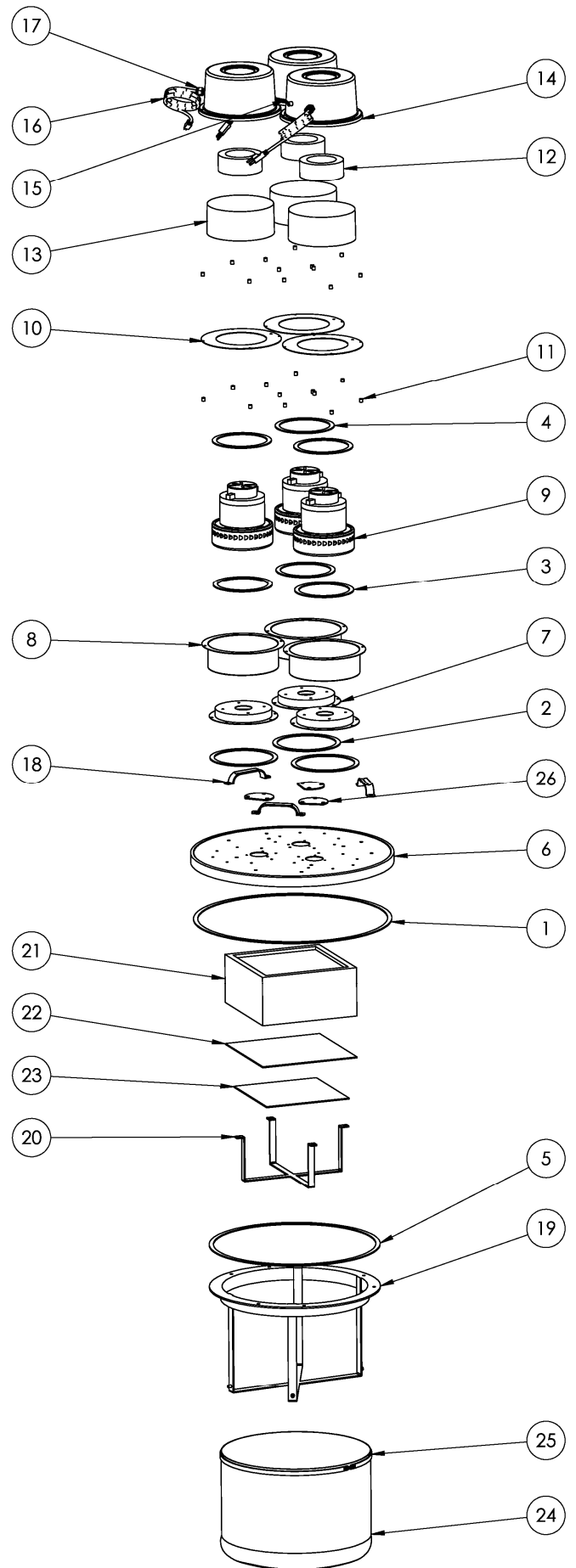
FILTER SET-UP PROCEDURE

1. Place HEPA filter on lid, making sure the airflow arrows are pointing towards motors
2. Slide HEPA filter-hold down bracket over HEPA and onto the four bolts. Using the locking nuts, tighten down the cage to secure the HEPA filter
3. Place the impaction filter on the HEPA filter.
4. Next fasten the polyester filter pad to the Velcro on the HEPA filter.
5. Pull the filter bag with locking band over the bag holding ring and secure into place by snapping the latch.
6. Place the plastic collection bag into the tank. Make sure the breather holes on the bag are inside the tank and the intake tube is through the tube hole in bag, allowing for materials to dump into the bag. Pull the top portion of the plastic bag over the top of the tank and roll it over the outside of the tank.
7. Take the Dacron filter bag and stretch the elastic over the top of the tank, allowing the elastic to rest on the outside of the tank. Push center of bag into the tank.
8. Set lid assembly on the tank. Snap the four latches into place.
9. Vacuum is ready for operation.

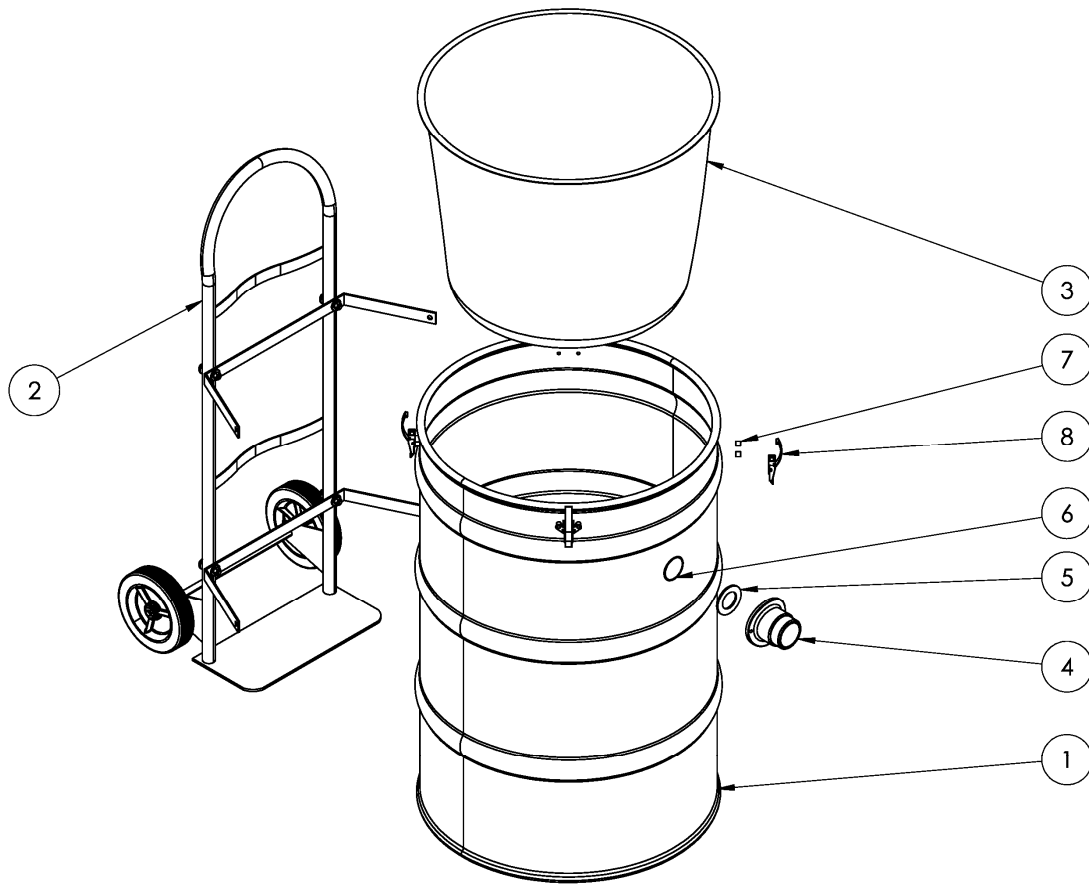


#HD55345 - LID ASSEMBLY

PC NO	PART NO	DESCRIPTION	QTY
1	860582	LID GASKET	1
2	860922	MOUNTING PLATE GASKET	3
3	520327	LOWER MOTOR GASKET	3
4	520029	UPPER MOTOR GASKET	3
5	860942	BAG SEALING GASKET	1
6	860150	55 GALLON LID	1
7	520009	MOUNTING PLATE	3
8	540058	MOTOR HOUSING	3
9	520365	MOTOR	3
10	520304	MOTOR HOLD DOWN	3
11	520214	LARGE SPACER	28
12	520016	FOAM RING	3
13	520004	DOME FELT	3
14	520001	MOTOR DOME	3
15	520015	TOGGLE SWITCH	3
16	860685	POWER CORD	3
17	520013	ELECTRICAL CORD STRAIN RELIEF	3
18	520222	LID HANDLES	3
19	860152	FILTER BAG SPACER CAGE	1
20	860151	FILTER CAGE	1
21	560028	HEPA FILTER	1
22	560030	IMPACTION FILTER	1
23	560020	POLYESTER PRE-FILTER	1
24	560022	FILTER BAG	1
25	860153	FILTER BAG CLAMP	1
26	860807	NON REVERSING FLUTTER VALVE	3



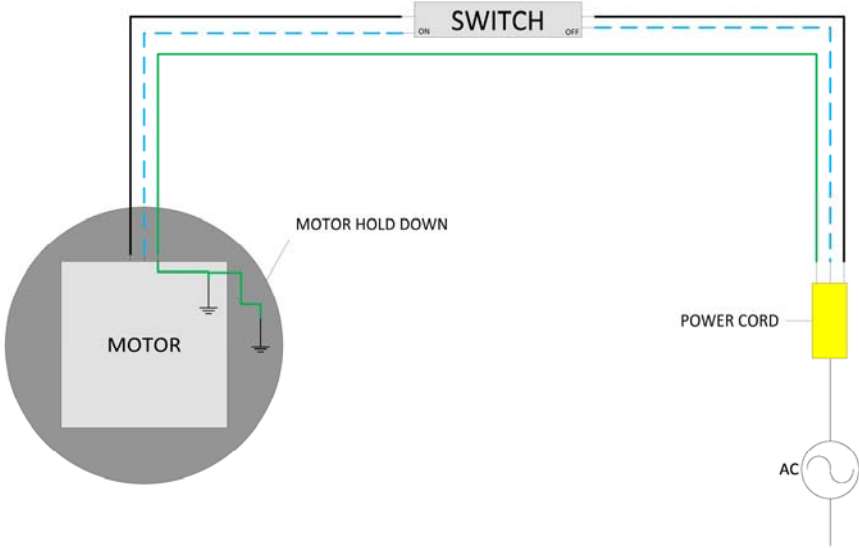
#HD55345 - 55 GALLON TANK ASSEMBLY



PC NO	PART NO	DESCRIPTION	QTY
1	520308	55 GAL DRUM	1
2	860154	CART ASSY	1
3	560029	DACRON FILTER BAG	1
4	520220	INTAKE	1
5	520216	INTAKE GASKET	1
6	540001	DOWN TUBE 90 ELBOW	1
7	520214	LARGE SPACER	8
8	520019	LID LATCH	4
9	860089	POLY BAG W/BREATHER HOLES (NOT SHOWN)	

#HD55345 WIRING DIAGRAM

COLOR CODE SCHEME	
GREEN	
BLACK	
WHITE	



WARRANTY

Nikro HEPA Vacuums are warranted for 2 years from the date delivered to the original end user and may not be assigned or transferred.

Parts, which become defective due to faulty workmanship or materials during normal use in this period will be repaired or exchanged at no charge if returned and approved by an authorized Nikro service center. All replaced or repaired parts shall only be warranted for the remainder of the original two year warranty period.

After the expiration of the two year warranty. All warranties on this unit including fitness for a proposed usage or purpose will become void.

The end user shall be responsible for freight charges incurred to deliver warranted product to an approved Nikro service center. Nikro shall be responsible for freight charges incurred in returning unit to customer, but not to exceed the original freight charges to customer.

It shall be wholly Nikro's decision to repair, replace or refund the purchase price of any such defective goods.

This warranty does not apply to normal wear and tear, neglect, misuse, abuse or incorrect installation. If any other replacement parts, filters or attachments are used other than original Nikro parts, this warranty will become void.

Nikro disclaims responsibility for loss of production, profits, goodwill or any other costs that may indirectly occur due to the failure of this product.

H.E.P.A. FILTER STANDARDS AND CERTIFICATION

Nikro H.E.P.A. filtered vacuums are built in accordance with ANSI Z9.2 standards.

All Nikro H.E.P.A. filters are manufactured and individually tested using the MIL-STD 282 D.O.P. test, or the IEST-RP-CC-001.3 test method.

Each filter is tested and certified to have a minimum efficiency of 99.97% @ 0.3 micron particles. All filters are then individually labeled and registered by the manufacturer.

All H.E.P.A. filters used in Nikro equipment meet, and in most cases, exceed the minimum standard of 99.97% efficiency @ 0.3 micron particles, and comply with OSHA and EPA standards for cleaning the air of toxic and nuisance dust such as mold, lead and asbestos.